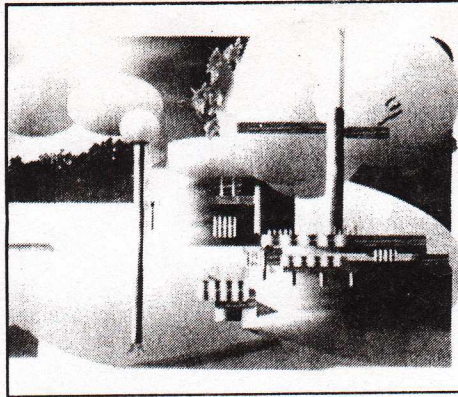


The Village

West Village, East Village, Soho, Tribeca and Lower East Side



Digital art

A showcase of computer-generated artwork as judged by a panel of prominent computer artists, the second annual New York Salon Computer and Art Design Show, will be on display at the Visual Arts Museum this month. In keeping with the theme of futuristic technology the art work will be arranged with help from a specially designed program called "Virtual Gallery," and the show will later be featured on Internet. Above: "Nut Forest," by Les Barta.

New York Digital Salon Computer and Art Design Show, at Visual Arts Museum, 209 E. 23rd St; until Nov. 26. Mon.-Thur., 9 A.M.-8 P.M., Fri. 9 A.M.-5 P.M., Sat. 11 A.M.-5 P.M. 592-2010.

ART BUSINESS NEWS

March 1995

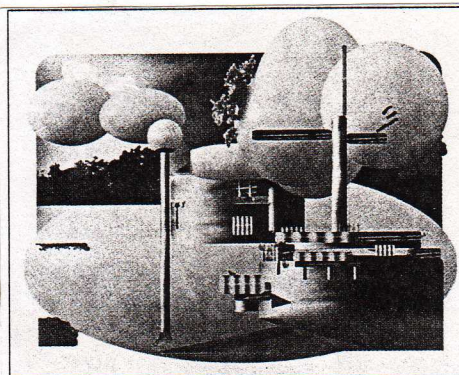
Computer-Generated Art Starts Journey On the Road to Mainstream Acceptance

Les Barta, an artist in Incline Village, Nev., has been using a computer since 1990 to rearrange the elements of images into new, abstract forms. "I take things apart and put them back together," Barta says. "There is a convergence of technology and art in my work. Basically, my art is about changing our ways of seeing. I use the computer because it is the best available means."

Galleries throughout the country are now showing computer-generated art.

Barta has had his works included in nearly 100 exhibitions around the country. Still, he says, digital art has a hard time being accepted. "Most of my work has been shown in museums - there are very, very few galleries" showing computer works. "Well-established, high-profile artists who happen to be using a computer have no problems getting into galleries, but it's very different for artists without established names," Barta adds.

But he says that art dealers should remember that, "The key thing with computer art is, like any art form, the art has to work. It has to have a powerful effect on people, regardless of the medium."



"Nut Forest" is a computer photoconstruction by Les Barta, Incline Village, Nev.